

4600 PLUS Ethernet Firmware Upgrade Procedure

v.89 is the latest version of Ethernet firmware, loading this will NOT affect the printer's main firmware. If the printer is currently not communicating thru the ethernet port, then the firmware must be upgraded thru USB or serial port.

What's needed:

1. Windows computer with "Printer Utility" installed.
2. Printer must be attached to network (if working) or directly to computer via Ethernet, USB, or serial port.

Download "Printer Utility 4600 plus" AND "140180v.98" Firmware,

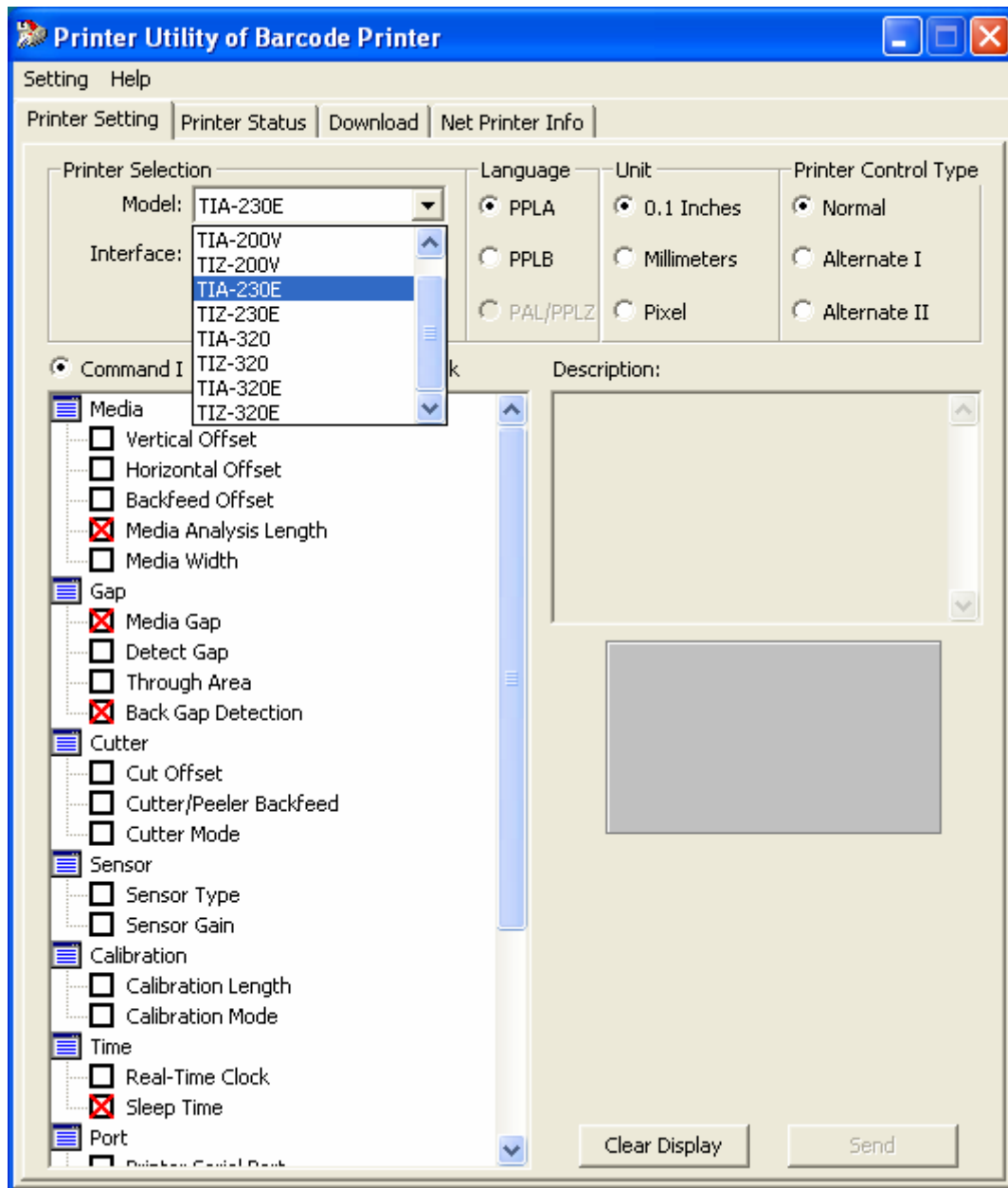
<http://www.amtdatasouth.com/support-1/downloads/software/>

(unzip after downloading)

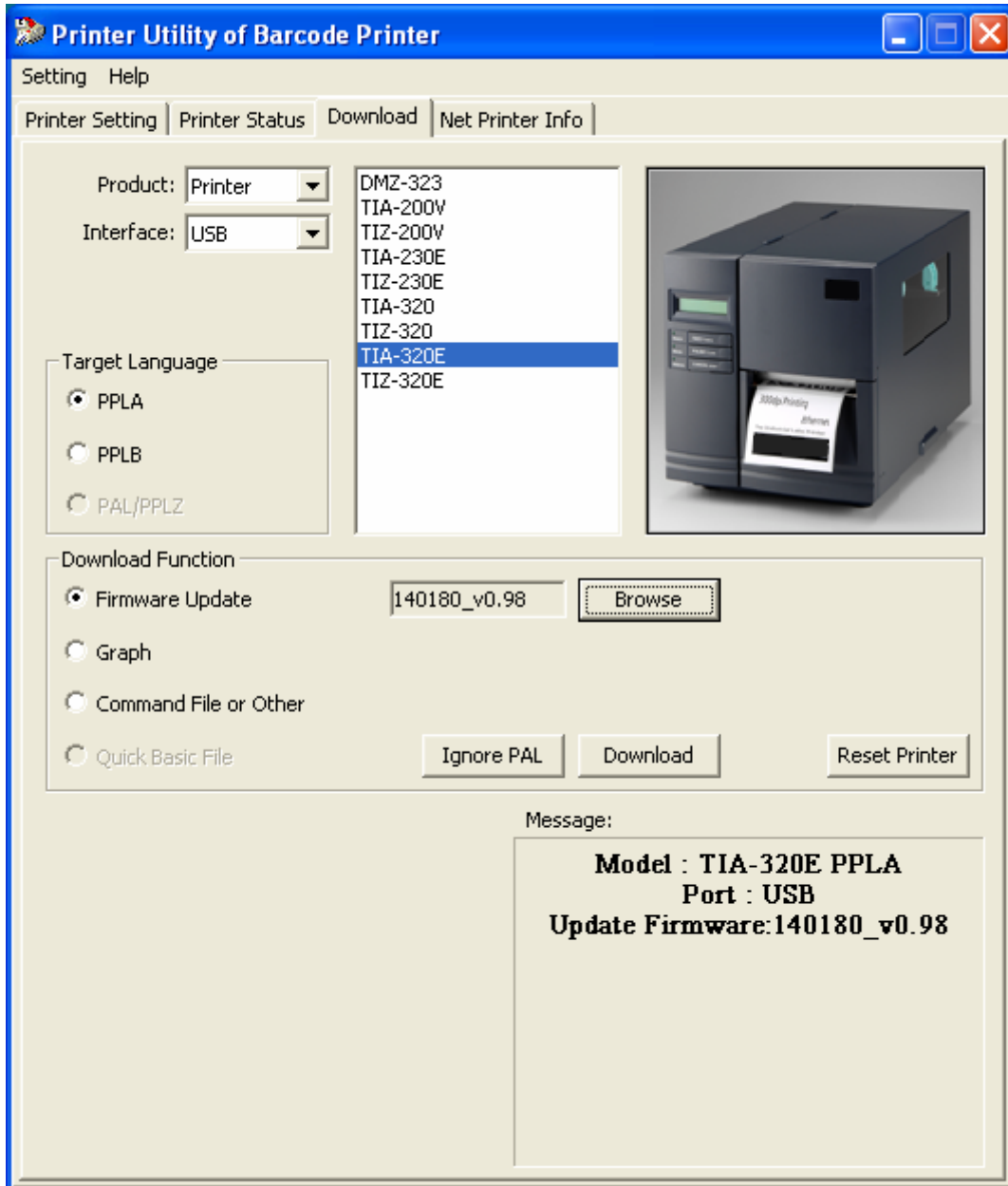
To upgrade Ethernet firmware version

1. Connect and power on printer. Start Printer Utility.
2. Select the appropriate model (check the display on the printer)
 - For (203, PPLB) choose TIA230E
 - For (300, PPLB) choose TIA320E
 - For 203 PPLZ or PAL choose TIZ230E
 - For 300 PPLZ or PAL choose TIZ320E

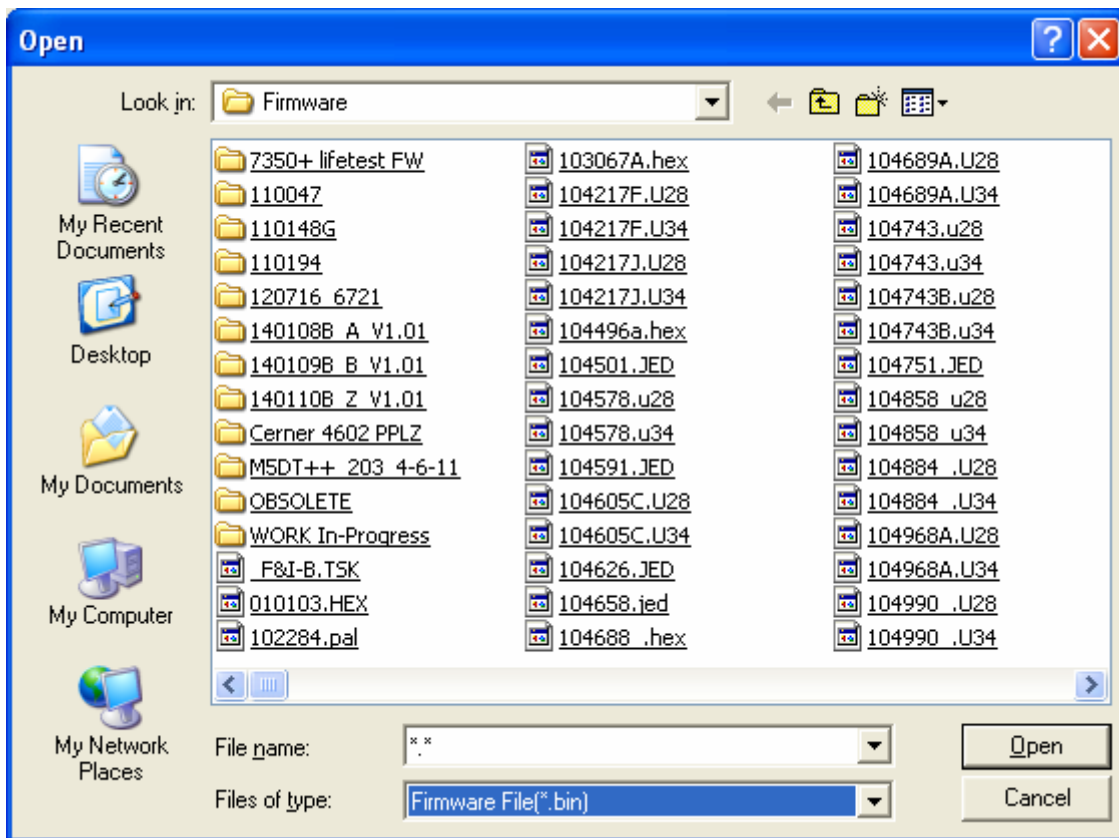
NOTE: If your display reads anything else, such as "waiting for data" Then a PAL is loaded and will need to be bypassed before continuing. Goto DOWNLOAD tab in the utility and click IGNORE PAL button.



3. Next, select the DOWNLOAD tab and select FIRMWARE UPDATE. Make sure you have the right Product and Interface to load thru.



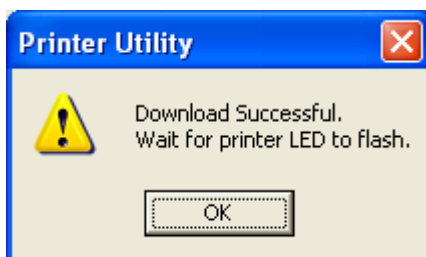
4. Then click BROWSE and enter *.* for File name



5. Click OPEN and locate the firmware file you've downloaded and unzipped, "140180 v0.98" then click open again.

6. Then click the DOWNLOAD button. If a status message appears, click OK

7. The download will begin and then show the following screen.
Do not re-cycle power on the printer yet.

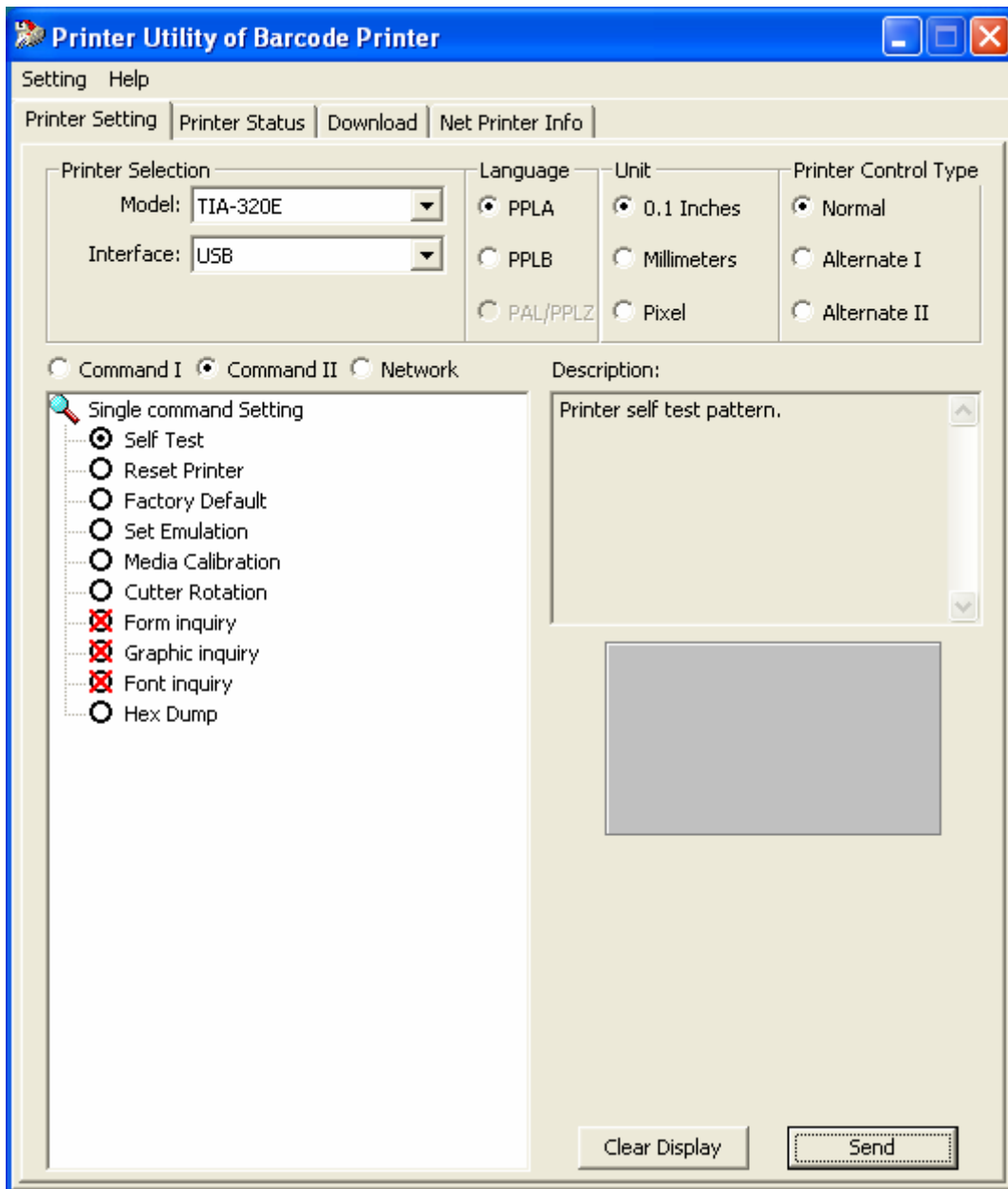


8. Wait for the LCD screen on the printer to flash :

**“ EHTERNET CARD
UPDATE FINISH”**

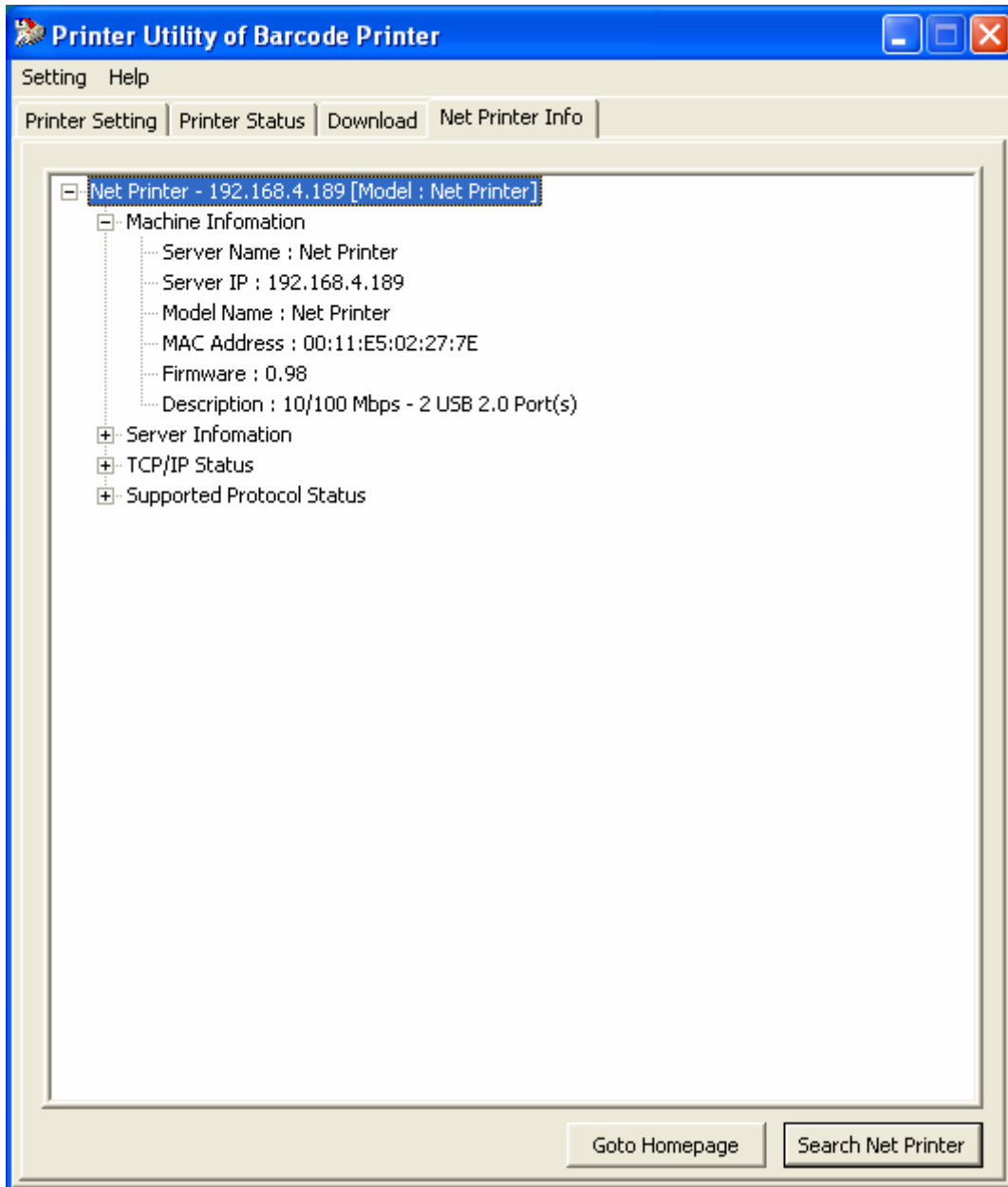
9. Now turn off printer for at least 5 seconds then power on.

10. Verify the correct firmware is installed by selecting the **PRINTER STATUS** tab on the utility, then check the **Command II** button and select **SELF TEST** press **SEND**

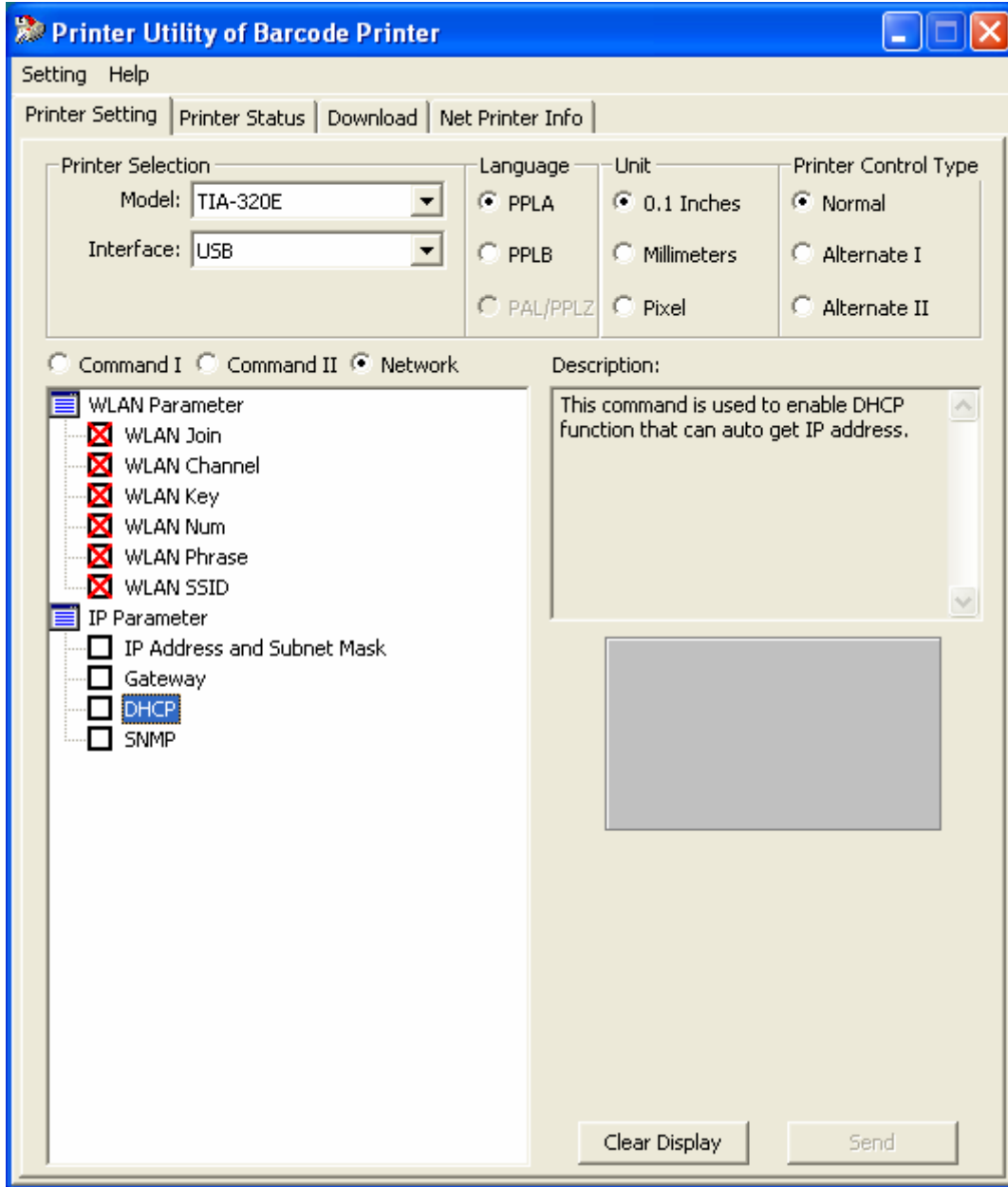


11. If your media is at least 2in wide, then look at approx line 30 of the printout and it should read ETHERNET VERSION 0.98

Otherwise, attach the Ethernet cable, setup the IP address (pg 7) and click the NETPRINTER INFO tab on the utility. Expand the pull down tree and look for **Firmware: 0.98**.



To IP address, or DHCP goto PRINTER SETTING tab, NETWORK
Input info and click SEND



END OF PROCEDURE