

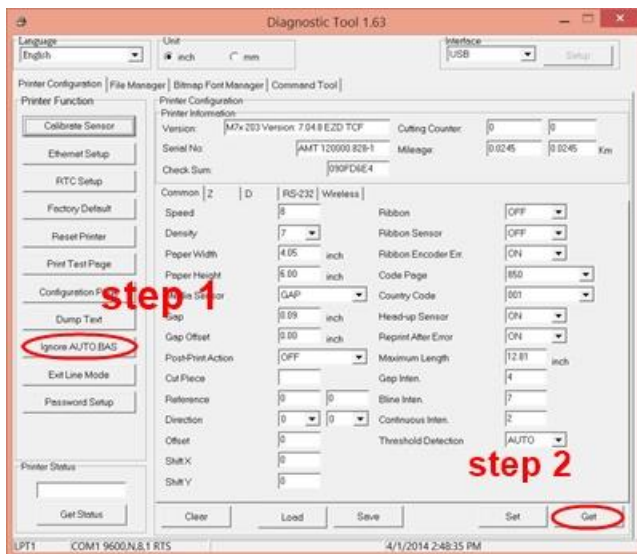
M series PAL removal and calibration via diagtool –

Your printer has a special PAL program installed. The PAL will have to be removed for you to use it with windows computers.

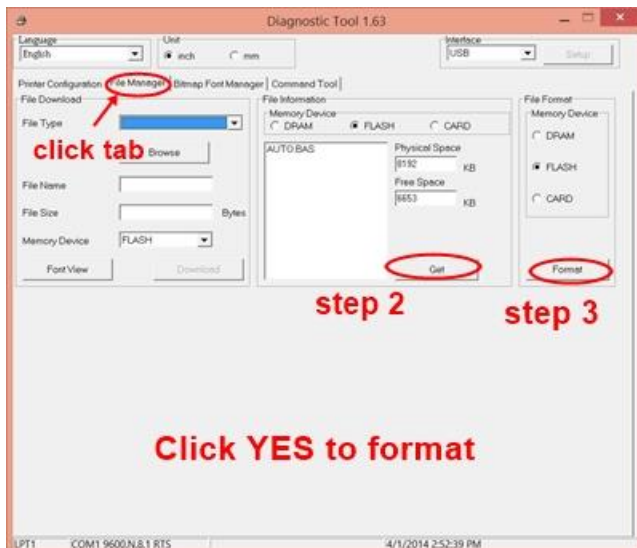
You will need:

1. USB printer cable (or ethernet if on a network) but USB is easier for setting the printer features. After the features are set, you can switch to network cable if required.
2. The “diagtool” printer utility program. It can be downloaded here <http://www.amtdatasouth.com/support-1/downloads/software/> (select diagtool v 1.54)
3. Install diagtool on your PC and connect it to your printer.
4. I recommend you download the user guide for the M7 here <http://www.amtdatasouth.com/support-1/downloads/manuals/>

To remove PAL open diagtool and follow these steps:



That bypasses the PAL,
now to remove it from the printer Select the File manager tab



Then select the Printer Config tab to take you back to the main window.

