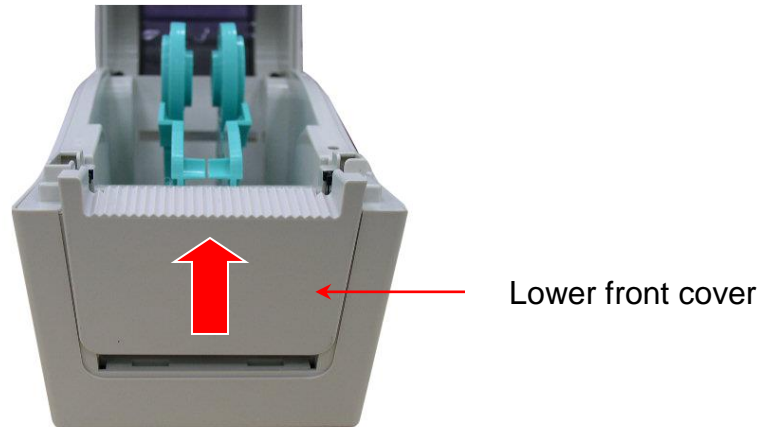


3.2 Replacing the Main Board and RS-232 (Ethernet interface board/option for M1)

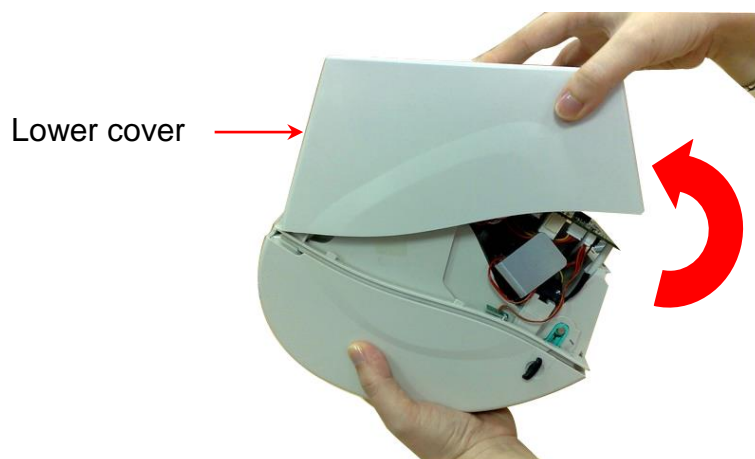
1. Open the top cover and remove the lower front cover.



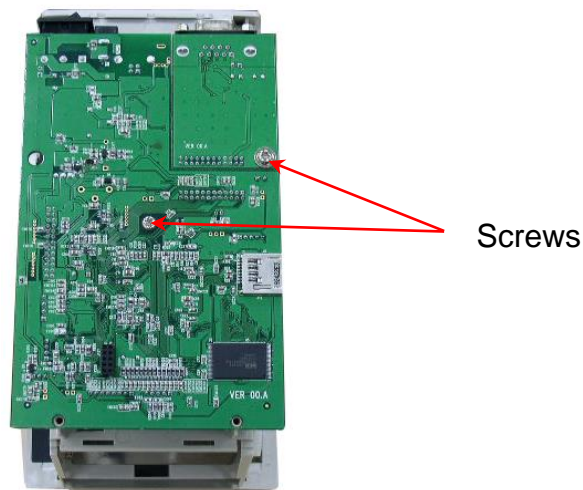
2. Close the top cover. Then turn the printer upside down and use the screwdriver to remove the 4 screws from lower cover.



3. Remove the lower cover.

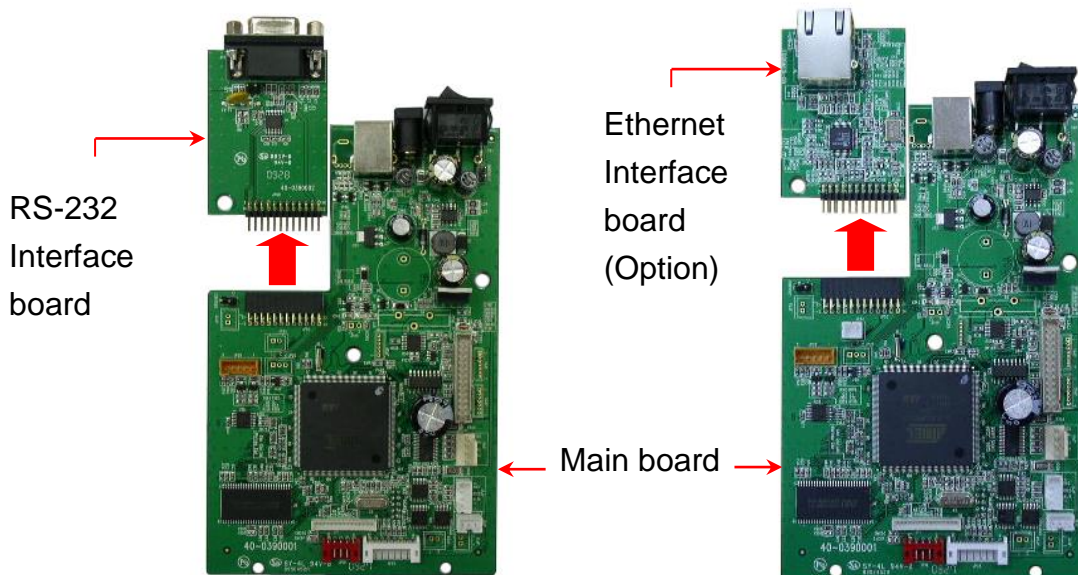


4. Remove 2 screws from the main board and RS-232/Ethernet interface board.

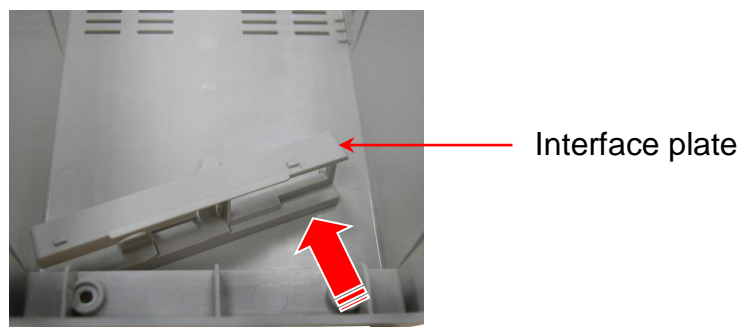


5. Disconnect all connectors from the main board.

6. Remove/Replace the main board and RS-232/Ethernet interface board.



7. Take off the interface plate from the lower cover.



8. Reassemble the PCB, lower cover and lower front cover in reverse procedures.

9. Insert the under side of interface plate first then push the upper side of interface plate to replace it.

